

Play of Colour

6 contemporary Korean artists... a kaleidoscope of varying techniques, thematic concerns and colours at play...



KIM, KEUN-JUNG

Kim, Keun-Jung focuses on Sipjangaeng, or the ten traditional Korean symbols of longevity and the traditional colours of Obang (the five basic colours of blue, red, yellow, white, and black, which are directly related to the energy of the five elements - metal, wood, water, fire and earth) and Ogan (colours corresponding to Yin-yang and five elements of the universe placed in the five directional positions of the east, west, south, north and centre, respectively). She uses these traditional elements in a unique and modern way, using specific painting techniques and dyeing to reflect on the nature and meaning of life.



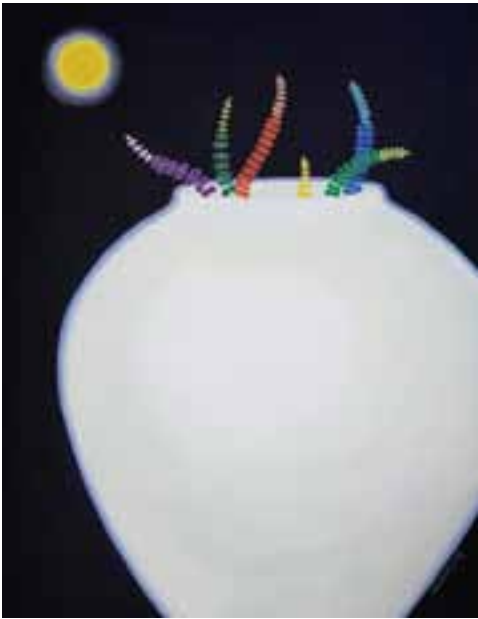
HA, MI-GOUNG

Ha, Mi-Goung Rebecca West's statement that "life ought to be a struggle of desire toward adventures whose nobility will fertilize the soul" inspires artist Ha Mi-Goung who draws and paints to sincerely and truthfully journey through life.



JU, MI-HYANG

Ju, Mi-Hyang is inspired by Nature, particularly trees which we encounter in our everyday lives. The act of painting is seen as a re-interpretation which occurs as both a physical visual reaction and as a reflective process of re-calibration where memory, space, time and life experience are conflated. The resultant landscape is therefore often not a clichéd conventional forest but a landscape of the mind which lies between objective and subjective realities.



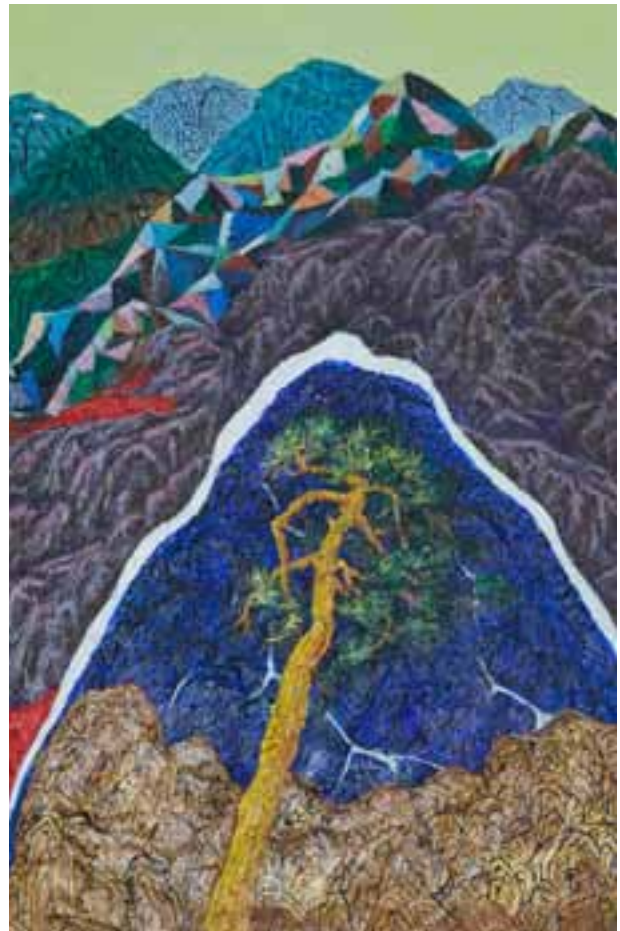
LEE, EUN-JAE

Lee, Eun-Jae focuses on recalling a scene seen and felt in the past as a space to be remembered and an inspiration to draw upon. Past, present and future are deftly collated as the memories imprinted and stored are transferred as a filtered landscape on to the canvas.



LEE, SO-MYUNG

Lee, So-Myung focuses on a redemptive journey when a child who was unaware of the greatness of Nature, reflects on the same theme, only this time, as a middle-aged woman. While the work symbolizes a deeply personal journey, it could also be co-opted as a potentially transformative universal narrative.



PARK, JUNG-KYU

The artist believes that there are many perceptions when one looks at or imagines a forest. Within the forest, there is a nuance of childhood, treasured like a distant jewel far away from the viewer. There is also a big tree close to the viewer, reminding us of the present, pressing and immediate in its demands. Park, Jung-Kyu aims to understand and accept this continuum of past and present, through his artwork.

Play of Colour is curated by Kim, In-Joon.

Presented in association with



The exhibition will be on view at The Gallery @ InKo Centre from

5th July to 16th August 2019.

10.00 a.m. to 6.00 p.m, (except Sundays).